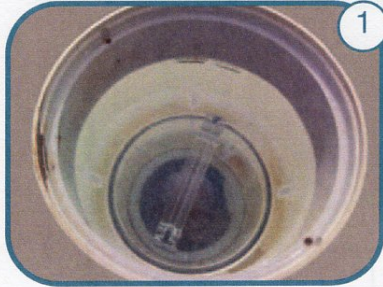


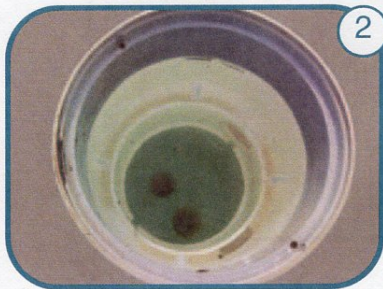
Installation Guide

for Canister Stop Ring (005-670-6192-02)
& MVFuse Stop Ring (005-670-6193-01)



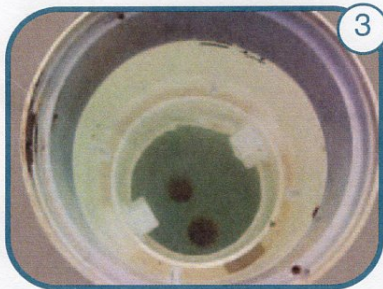
1

Shut off the pump system and remove the deck lid from the canister.



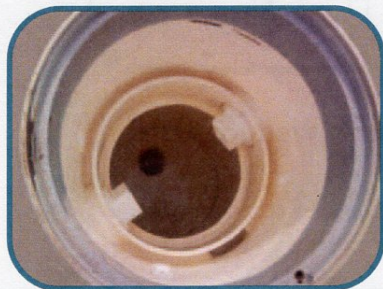
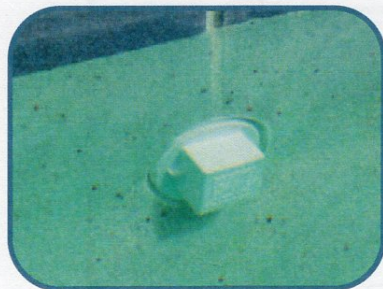
2

Remove the internal lid and basket from the canister.



3

Plug both 2" threaded side ports with 2" plugs and the 1½" balance line port on the pool wall with an expandable or threaded plug. Plug the 2" port(s) in the bottom of the canister.

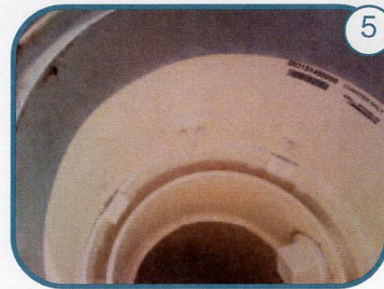
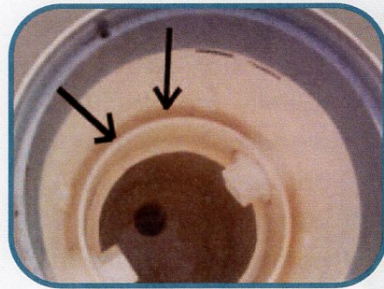


Drain the canister of water using a shop vacuum with a narrow tip or cup. The water level must be below the side ports.



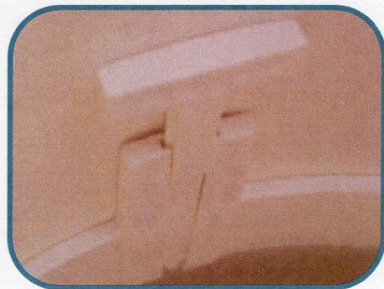
4

Dry the remainder of water with a towel or rag. Remove any existing tabs with chisel/hammer and/or pliers. Remove any debris in the area below the tabs, between the canister housing and the lid seal ring. This area must be clean and dry.



5

Test fit ring with T-wedge. Place ring in canister so wedge notch is on side without a port. The ring feet must sit between the canister wall and the lid seal ring so the ring is level. The ring must tighten in canister at or before bottoming the T-wedge into the notch. The T-wedge must be placed in the ring so the step is toward the inside. Incorrect placement could cause interference between the ring and internal lid.



Paramount
Pool Life. Simplified.

www.1Paramount.com

1.800.621.5886